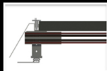
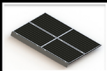


## ACCESSORIES

### SKIRT

SKIRT CAN BE USED WITH ANY RACKING SYSTEM ON THE MARKET  
OR WILL INTEGRATE SEAMLESSLY WITH SPIDER RAX.  
SKIRT CAN BE USED AS A FULL PERIMETER TO KEEP BIRDS  
OUT AND GIVE ULTIMATE FINISHED LOOK



### END CLAMPS

FINISH OFF END OF ARRAY WITH OUR UNIVERSAL END CLAMP



### TWO COURSE FLASHING

NEW TWO COURSE FLASHING TO BE 100% CODE COMPLIANT ON  
COMP SHINGLE ROOFS. REQUIRES NO CUTTING OF SHINGLES.



## FEATURES

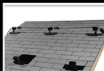
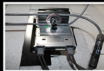
### WIRE MANAGEMENT

#### NEW

(PATENT PENDING)

INTEGRATED WIRE MANAGEMENT FOR TRUNK CABLES OR PV WIRES

NOW INCLUDED WITH EVERY SYSTEM



### MICRO INVERTER ATTACHMENT

MICRO INVERTER OR OPTIMIZER ATTACHES TO SLOT ON THE BOTTOM OF MOUNT

OPTIONAL MICRO INVERTER CLAMP ARE AVAILABLE

SIMPLY ATTACH MICRO INVERTER OR OPTIMIZER TO MOUNT BEFORE ATTACHING TO ROOF



# SPIDER - RAX

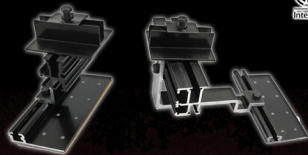
Deadly Efficient

1-844-773-7729 [WWW.SPIDERRAX.COM](http://WWW.SPIDERRAX.COM)



MADE IN USA

50 STATE ENGINEERING

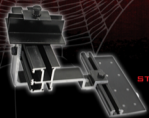


# SPIDER - RAX

1-844-773-7729 [WWW.SPIDERRAX.COM](http://WWW.SPIDERRAX.COM)

UL SYSTEM FIRE CLASS RATING A, TYPE 1 & 2 MODULES

## BLACK WIDOW TILE



STUD-LESS  
RAIL-LESS  
INTEGRATED GROUNDING  
CUT INSTALLATION TIME BY 50%  
STUD ATTACHMENT OPTION AVAILABLE

### BENEFITS OF BLACK WIDOW TILE

-CLAMP FITS ALL MAJOR BRAND PANELS 1 1/8" - 2" (28.5 - 50 MM)

-SAVES TIME AND LABOR COSTS

-HEIGHT ADJUSTABLE FOR ALL TILE TYPES; SPANISH, FLAT AND METAL

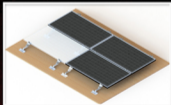
-RATED FOR UP TO 180MPH WINDS

-INTEGRATED GROUNDING

-VERTICAL AND HORIZONTAL ADJUSTABILITY

-VERTICAL AND LATERAL ADJUSTABILITY

-UNIT COMES WITH BUTYL SEALANT PRE-INSTALLED ON BASEPLATE

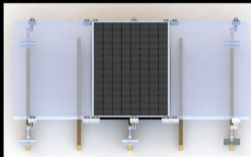


### INSTALLATION OF BLACK WIDOW TILE



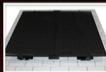
## STUD ATTACHMENT

WE NOW OFFER A STUD ATTACHMENT OPTION FOR COMP AND TILE.  
MODULES CAN BE ORIENTED PORTRAIT OR LANDSCAPE.



## SANDWICH CLAMP

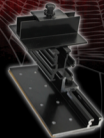
SANDWICH CLAMP IS USED TO CONNECT INTERMODULE WITHOUT NEEDING TO ATTACH TO THE ROOF



 SPIDER-RAX

1-844-773-7729 [WWW.SPIDERRAX.COM](http://WWW.SPIDERRAX.COM)

## BLACK WIDOW COMP



STUD-LESS  
RAIL-LESS  
INTEGRATED GROUNDING  
CUT INSTALLATION TIME BY 50%  
STUD ATTACHMENT OPTION AVAILABLE

### BENEFITS OF BLACK WIDOW COMP

-CLAMP FITS ALL MAJOR BRAND PANELS 1 1/8" - 2" (28.5 - 50 MM)

-SAVES TIME AND LABOR COSTS

-HEIGHT ADJUSTABLE FOR ALL TILE TYPES; SPANISH, FLAT AND METAL

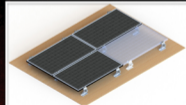
-RATED FOR UP TO 180MPH WINDS

-INTEGRATED GROUNDING

-VERTICAL AND HORIZONTAL ADJUSTABILITY

-VERTICAL AND LATERAL ADJUSTABILITY

-UNIT COMES WITH BUTYL SEALANT PRE-INSTALLED ON BASEPLATE



### INSTALLATION OF BLACK WIDOW COMP

